

AGRIWELD

Operator Manual

Basic Quickshift



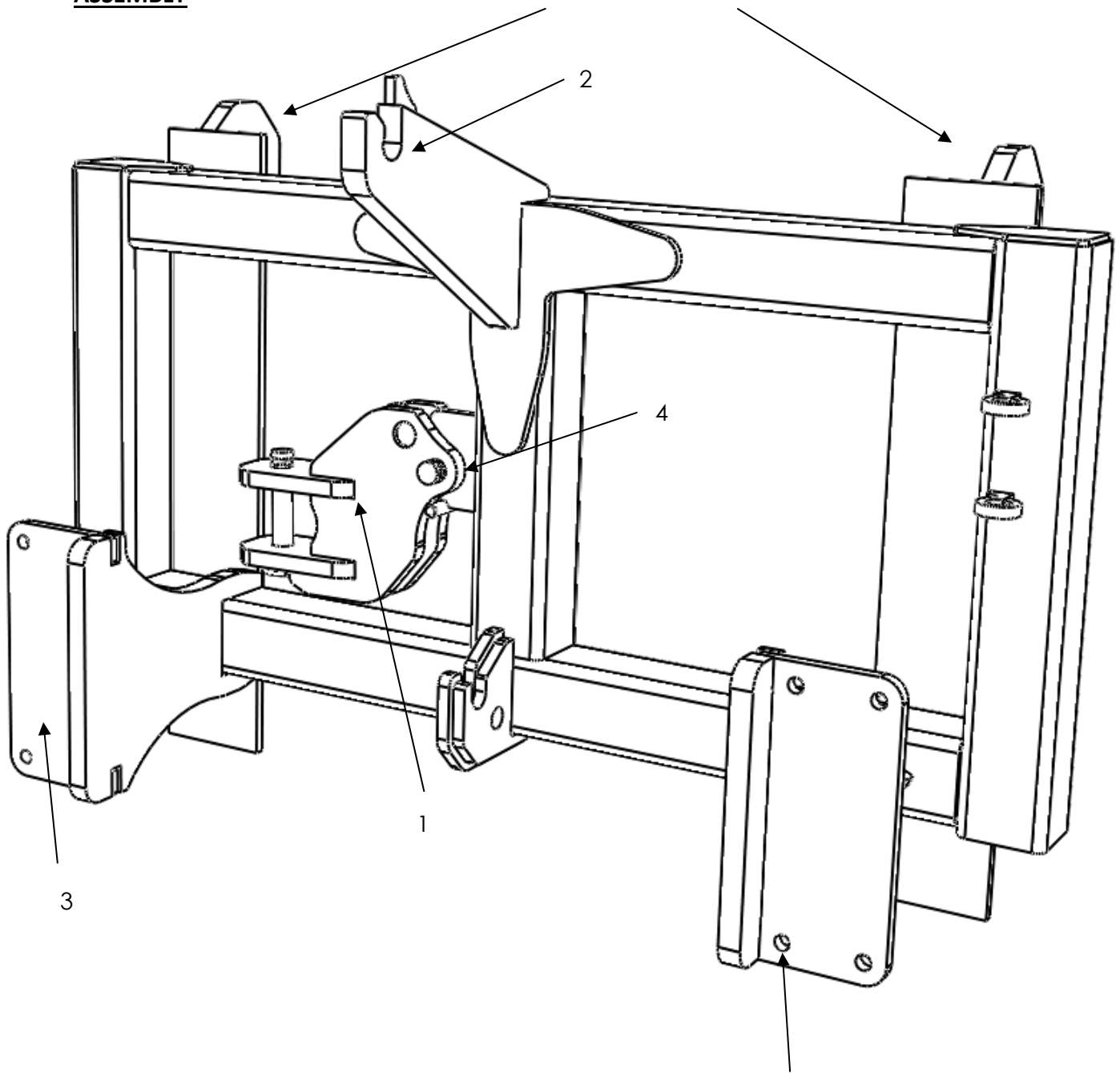
Agriweld Ltd
Main Street
Garton-on-the-Wolds
Driffield
YO25 3ET

Contents

Page 3	Assembly
Page 4	Weights, capacities, parts list & Technical specifications
Page 5	clevis
Page 6	Fitting towing clevis
Page 7	Summary, moving 3 point linkage & moving trailed equipment
Page 7-8	Connecting to forklift loader
Page 9-10	Further safety & special safety instructions
Page 11-12	Storage safety & important maintenance & Pre Use Checks
Page 13-15	Risk assessment
Page 16	warranty
Page 17	stickers
Page 18	CE Declaration of conformity

ASSEMBLY

Brackets (Example)



Holes for rubber pads
(optional)

WEIGHTS AND CAPACITIES

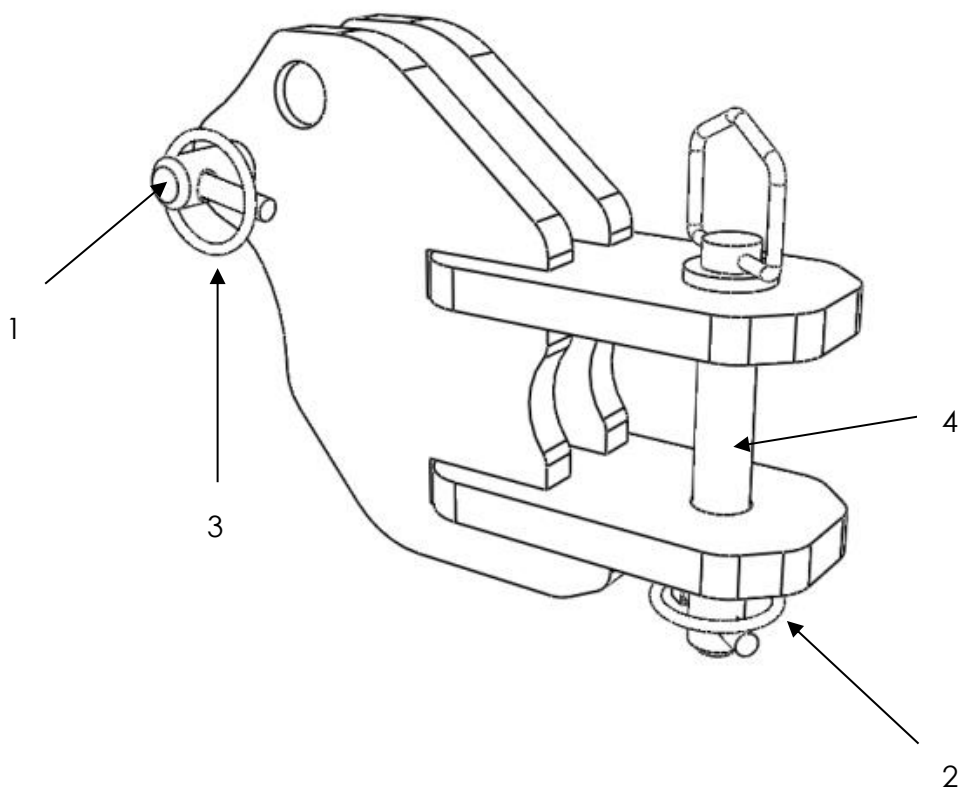
Unit Weight	Maximum Capacity
195 KG	5000 KG

Machine technical specification

Weight:	195kgs
LLC:	367mm
Capacity @ LC:	5 Tonnes (or max capacity of forklift/loader if lower than this)
Centre of gravity:	70mm

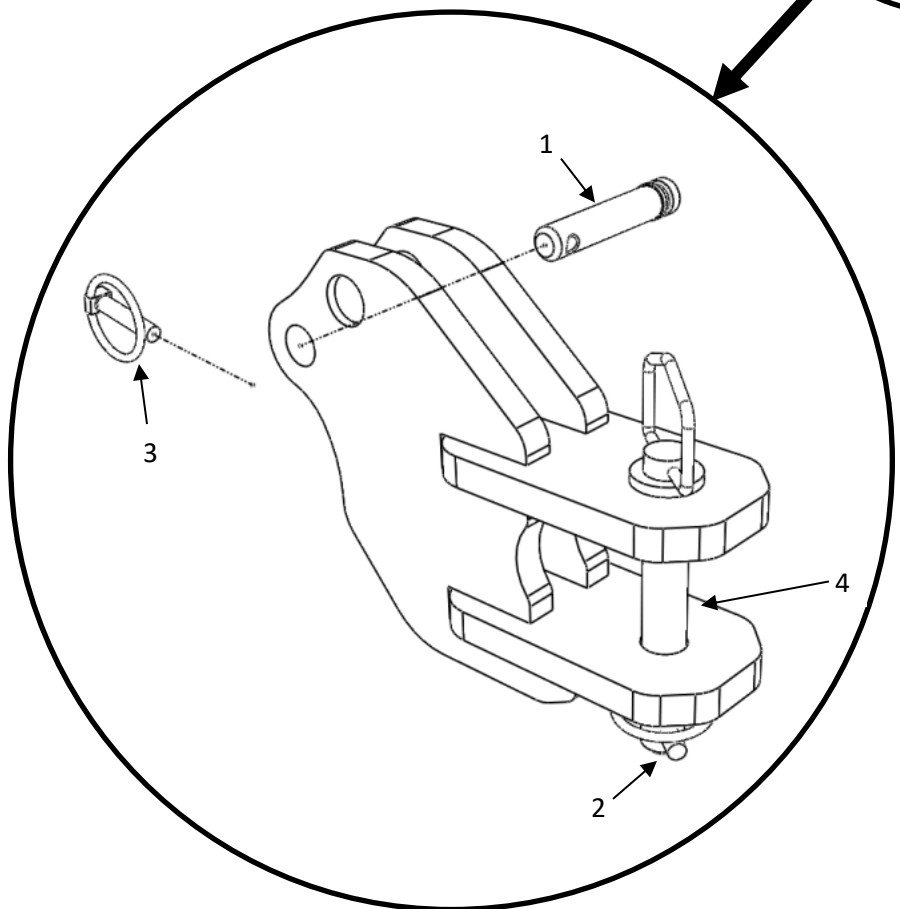
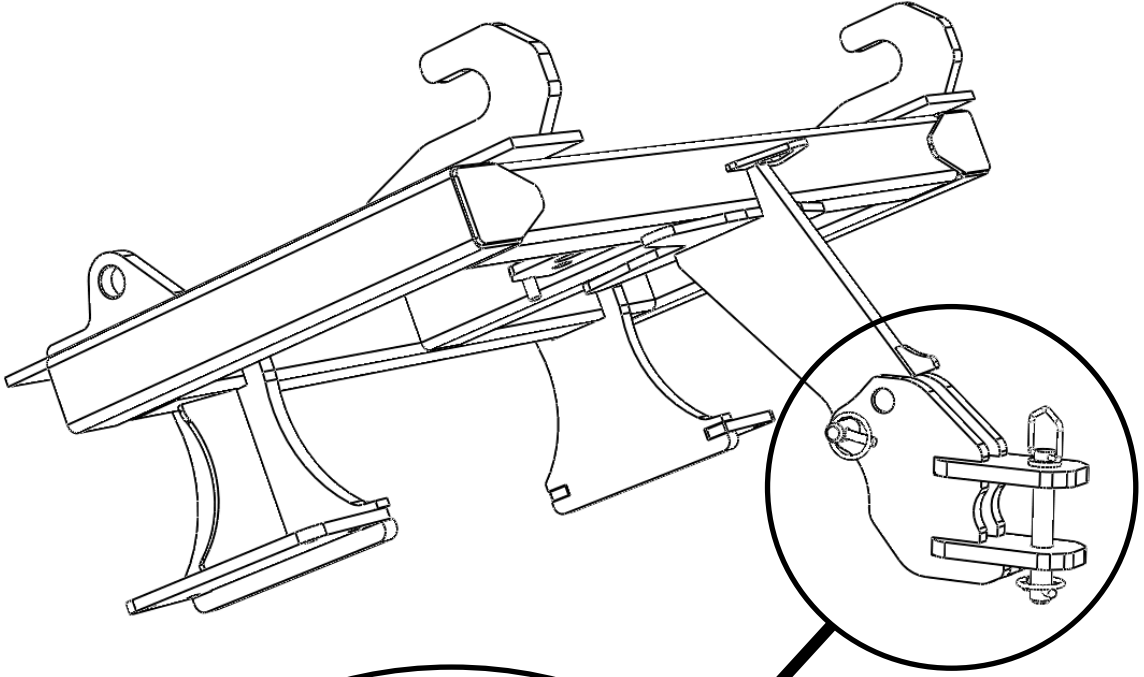
MAIN FRAME PARTS LIST

Item Number	Part Number	Description	Quantity per Machine
1	SQS_Clev_Main	Towing Clevis	1
2	SQS_3002	Lifting Hook	1
3	SQS_1501	Stabiliser Plate	1
4	SQS_1204	Towing Clevis storage point	1

CLEVIS

Item Number	Part Number	Description	Quantity per Machine
1	Z325095KR	Towing Clevis Securing Pin	1
2	LP6Z	Linch Pin	1
3	LP11Z	Linch Pin	1
4	1" Drawbar Pin	Z525157KR	1

Fitting Towing Clevis



Remove towing clevis from storage point on main frame by removing securing pin (1). Fit to top hook as shown above. Line up hole on towing clevis with hole on lifting hook, replace main securing pin (1), ensure this is secured with the Linch pin (3) Remove and refit Drawbar Pin (4) and Linch pin (2) to attach and detach trailed Equipment.

SUMMARY

The Agriweld BASIC QUICKSHIFT is designed primarily for the safe and efficient movement of all 3 point linkage and trailed equipment.

The QUICKSHIFT forklift/loader attachment consists of a main lifting hook (which locates into the equipment's top link point), left and right lower stabilising plates (which locate into the equipment's lower link points) a main frame and relevant bracketing to fit your forklift or loader.

MOVING 3-POINT LINKAGE EQUIPMENT

The top hook is the main lifting or load bearing component. It locates in to the top link point of the equipment to be moved. The lower stabilising plates lock into the equipment's lower link points and prevent sideways movement whilst the equipment is being lifted and moved.

MOVING TRAILED EQUIPMENT

The QUICKSHIFT carries its own "Clevis" style drawbar attachment on the frame which can be used to move trailed equipment as required. The standard issue drawbar clevis is stored on the QUICKSHIFT frame by use of a pin and is attached to the main lifting hook with the same pin for use.

CONNECTING TO YOUR FORKLIFT LOADER

Please note that this is generalised information and connection may vary depending the type of headstock/brackets fitted. Operators should use their own judgement and experience when hitching/un-hitching the Quickshift and its attachments. Only personnel with the appropriate forklift/loader licence are authorised to use this machine. Statutory minimum age limits must be observed and reliable personnel only should perform maintenance/work on this machine. Persons undergoing training or instruction or taking part in a general training course should only use this machine under direct supervision of an experienced* or trained person.

****Experienced personnel are classed as those persons with appropriate engineering knowledge and training from an approved provider, supplemented with experience of working with this type of activity.***

Connection to handler via Quick-hitch bracketing

Tilt loader headstock slightly forwards and drive in slowly to locate loaders top mounting point into Quickshift corresponding top mounting point carefully. Crowd loader headstock back slightly to align lower Quickshift mounting point with the corresponding bracket on the loader headstock and secure with the relevant locking pins.

Carriage blocks/rails (Class 2, 3 or 4)

Tilt forklift carriage rails slightly forward locate top rail into corresponding top Quickshift carriage rail bracket. Crowd back slightly to locate lower carriage rail. Position lower carriage rails/blocks into operating position and secure with the relevant locking pins/bolts.

CAPACITY – IMPORTANT INFORMATION

The QUICKSHIFT has been load tested and certified with a safe working load (SWL) of **5 Tonnes***

***When fitted to any forklift or loader with a lift capacity less than 5 tonnes the safe working load (SWL) of the QUICKSHIFT is reduced to that of the forklift/loader's capacity.**

For example fitted to a 3 – tonne forklift, the QUICKSHIFT capacity is also reduced to 3 - tonnes.

Warranty claims arising from misuse and overload will not be covered.

GENERAL SAFETY

This manual must be provided to all persons concerned who will be involved with the setting up, operation, maintenance, and use of the forklift/loader and QUICKSHIFT. It must be available at all times.

If important safety instructions are not complied with, it can lead to the risk of injury to yourself and others as well as damage to property and the environment.

NON-COMPLIANCE WITH SAFETY INSTRUCTIONS CAN LEAD TO WARRANTY CLAIMS BECOMING INVALID.

QUALIFICATIONS AND TRAINING

Only personnel with the appropriate forklift/loader licence are authorised to use this machine.

Statutory minimum age limits must be observed and reliable personnel only should perform maintenance/work on this machine.

Persons undergoing training or instruction or taking part in a general training course should only use this machine under direct supervision of an experienced* and trained person. **See page 8 for definition.*

The use of spare parts, accessories and ancillary equipment not supplied or approved by Agriweld, could have detrimental effects to the construction or functions of the QUICKSHIFT. Agriweld shall not be responsible for any damage caused by the use of spare parts or accessories and ancillary equipment not supplied or approved by Agriweld.

The operator must be aware of their responsibilities with regard to observing traffic regulations. The operator must have the authority to refuse instructions issued by third parties which contravene safety.

The operator should only operate what he/she is trained and experienced to do. If you are not confident, assistance should be sought from a suitably qualified person before using the Quickshift and its attachments. Untrained and non-confident operators should be supervised by an experienced operator until it is deemed them safe to use on their own.

The driving characteristics of the forklift/loader are influenced and altered by the attachment of mounted machines and it is important to ensure adequate steering and braking ability as required.

Any conversions or modifications to the machine may only be carried out after prior consultation and written confirmation from Agriweld.

PLEASE NOTE: All forklifts and lifting equipment are subject to LOLER inspection/report within 12 months of service from new, by reputable engineers and records kept and maintained.

FURTHER SAFETY

Any warning signs/instructions on the machine provide important information and must be observed.

Ensure that you are familiar with the equipment, controls and functions of the forklift or loader and QUICKSHIFT before starting work.

Check round the machine for any noticeable damage, or missing parts before starting work.

It is advisable that the operator wears close fitting clothing to avoid the risk of snagging and trapping.

Ensure that you watch out for wandering individuals (particularly children!).

Remember to take into account the size of any attachments being moved and be aware of the sideways forces acting on the machine when turning and negotiating corners. Always ensure adequate all round visibility.

SPECIAL SAFETY INSTRUCTIONS

Take extra care when hitching up or un-hitching the QUICKSHIFT to/from the forklift or loader. Be aware of what is under the QUICKSHIFT and its load (such as your feet) before dropping off.

Ensure that the forklift or loaders hydraulic system is in full working order.

Never allow any person to stand between the forklift or loader and the QUICKSHIFT during connection or at any time unless the forklift or loader is secured against rolling away by use of a parking brake and/or wheel chocks.

It is forbidden to allow any persons to ride or sit on the QUICKSHIFT and its load at any time. Observers should maintain a safe distance when machine is in use.

When performing any adjustments to the machine the forklift or loader's engine must be switched off to prevent the hydraulics from operating.

NEVER walk or work under a suspended load. Always take measures to support the machine and its load to prevent crushing and/or death. Do not rely on the forklift/loader and QUICKSHIFT alone if you are working under a suspended load. Always use supports for example trestles or a frame capable of taking the load.

STORAGE AND SAFETY WHEN NOT IN USE

Always detach any attachments from the Quickshift when you have finishing using them.

The Quickshift will stand on its own when not mounted or in use, unless forced over by external sources. We advise the Quickshift and its attachments be stored away in an area clear from obstruction without causing hazard to other vehicles, damage to property or injury to individuals and by ensuring that the storage area is easily accessible for next use.

If you need to keep the Quickshift mounted to the forklift/loader in between use, it is important to ensure the Quickshift is lowered to ground level, the vehicle has the hand brake/equivalent secured, the loader engine is turned off and vehicle is locked.

IMPORTANT MAINTENANCE

It is important to check the main lifting hook, stabilising plates, drawbar clevis and pins for wear and ensure that none show significant signs of wear or damage.

Before use, always check round the QUICKSHIFT to ensure no damage has occurred and that the machine appears safe to use.

Keep the QUICKSHIFT clean at all times to ensure easy inspection.

Ensure that the forklift or loader is in full working order and that the QUICKSHIFT is attached to the forklift or loader correctly before starting work.

Never use the Quickshift and any attachments if any parts/pins are missing.

Routine maintenance and safety checks of the Quickshift does not require the operator to climb/stand on the machine at any time.

Do not overload the forklift and Quickshift, refer to capacity on page 10 for details. Only use the Quickshift for its intended purpose.

The Quickshift is subject to L.O.L.E.R inspections annually.

Acquiring spare parts

Please quote the details on the type plate(s) as well as the machine's serial no. on every order for spare parts or accessories, or enquiries of a technical nature.

The use of spare parts supplied by others shall only be permitted after consultation with the manufacturer. Original spare parts and accessories authorised by the manufacturer ensure safe and reliable operation. The use of other parts may invalidate the liability of the manufacturer for any consequences arising from such use.

Disposing of replaced parts

The following points should be observed before replacing or disposing of parts.

- Replaced parts, which still function, should be cleaned and stored in an orderly manner.
- Machine parts, which cannot be repaired should only be disposed of at appropriate collecting points or be collected by a scrap metal dealer.
- So-called "valuable" materials should be disposed of in a proper way, i.e. plastics, rubber, scrap metal, etc. should be recycled.
- Collect and dispose of old oil in accordance with the current regulations.

Pre-use checks & storage

Before operational use, it is important to inspect the handler and attachment with the recommended pre-use checks to prevent damage or danger.

- Check all mounting/securing pins are present and do not appear to be worn or missing. Replace as required.
- Physically check all nuts and bolts or other fixings are present and tight. Do not use if any are missing or broken.
- Visually check welds for cracks - this can compromise the strength and operational use of the attachment and may pose a health and safety risk.

- If relevant, check round all hydraulic hose and connections for leaks and damaged hydraulic pipe. Replace as required. Do not attempt to repair hydraulic hose.
- Check for any potential damage to the serial plate as this helps to identify the attachment, its origin of manufacture and will be required to order spare parts if needed.
- When attachments are to be stored away when not in use, correct storage methods are important in protecting the paintwork. The attachment should be cleaned down thoroughly and stored inside where possible.
- Always store your attachment in an area free from obstruction so not to cause hazard to others or damage to the attachment.

QUICKSHIFT Risk Assessment

Date risk assessment Reviewed February 2022 – Next due for review: FEBRUARY 2023 Revised August 2022

Organisation name: Agriveld Ltd

Reviewed by Dawn Ryan/Ellie & Kim.

MACHINERY TYPE: Quickshift forklift attachment

Description: An attachment specifically for use on forklifts/loaders with a maximum lift capacity of 5000kg, or 8000kg for the Plus model, for the lifting and moving of 3 point linkage and trailed equipment.

NOTE: ALL Operators must read and understand the OPERATORS MANUAL & RISK ASSESSMENT before using this Quickshift The OPERATORS MANUAL & RISK ASSESSMENT must be readily available for reference when required.

What are the hazards?	Who might be harmed and how?	Risk evaluation Levels 1-5 (1 = Low risk, 5 = High risk)	Precautions in place	Further action required/notes?
Entanglement and trapping	Operator/bystanders if loose fittings clothes are snagged causing possible entanglement	1	Notice about not wearing loose fitting clothes in the operator's manual. No mechanical moving parts reduces risk	Single man operation. Operator manual references watching out for wandering individuals during use
Impact by collision when moving attached machines	Bystanders/other property or vehicles	3	Notice to remind operator to watch out for wandering individuals particularly children in operator's manual. Operator manual states all operators must have experience and hold appropriate license to use the equipment. Operator manual advises to take into account size of the Quickshift with any attachments when manoeuvring. It is prohibited to use the Quickshift to move and transport implements on the public highway.	Operator manual references adjusting speed of travel to conditions and size of attachments being moved.
Risk of Stab/Puncture/Cutting/Severing/Impalement when using certain attachments	Operator/Bystanders if certain attachments are fitted to unit	2 (when bale spike/bag lift arms attachment)	Bale spike/bag lift attachments painted in different colour to main Quickshift for increased visibility. Refer to operator's manual for further safety information Use prohibited on public highway	Operators must hold appropriate license to use

QUICKSHIFT Risk Assessment

What are the hazards?	Who might be harmed and how?	Risk evaluation Levels 1-5 (1 = Low risk, 5 = High risk)	Precautions in place	Further action required/notes?
Loss of stability when freestanding and falling over	Operator/Bystanders/property	2	Stabilising plates act as feet for Quickshift to stand on when not in use, unless pushed over backwards with force. See operator's manual for safe storage advice	
Trapping/crushing whilst attaching implements to Quickshift via 3 point linkage	Operator/Bystanders	2	Low risk to operator of crushing/trapping due to single man operation. Operator does not need to leave the cab during attachment of implements to Quickshift. Low risk to bystanders being crushed/trapped during attachment of implements - note in operator's manual about being aware of wandering individuals, particularly children & operators must be experienced and hold appropriate license to use.	No mechanical moving parts to fail also reduces risk
Quickshift falling from loader during connection or disconnection due to operator error or incorrect attachment causing crush/trap injury	Operator/Bystanders	2	Low risk to operator of crushing/trapping due to single man operation. Operator does not need to leave the cab during connection/disconnection of Quickshift to forklift, unless brackets on forklift require a manual pin inserting to secure the unit to the handler via brackets. Small risk to bystanders being crushed/trapped between forklift/loader during connection/disconnection of Quickshift. Note in operator's manual about being aware of wandering individuals, particularly children.	Operator manual states that operators must be experienced and hold appropriate license
Slip/Trip/Fall during use or maintenance	Operator	1	Low maintenance attachment does not require the machine to be stood/climbed on to perform any checks. Warning about this stated in the operator's manual.	Visual daily checks do not require operator risk. Operator manual refers to working in an area free from obstructions to prevent trips whilst undertaking checks.
Overloading forklift	Operator/bystanders. By not conforming to Quickshifts maximum safe working load and/or forklift's maximum capacity if	3	Serial plate clearly states maximum load capacity on each Quickshift.	Operator manual states that if forklift capacity is lower than capacity of Quickshift, the Quickshift capacity is reduced accordingly. See declaration of conformity.

QUICKSHIFT Risk Assessment

What are the hazards?	Who might be harmed and how?	Risk evaluation Levels 1-5 (1 = Low risk, 5 = High risk)	Precautions in place	Further action required/notes?
Damage/injury caused by detached trailer/trailed implement when using drawbar attachment (included in Quickshift unit as standard)	<p>lower than this.</p> <p>Bystanders. Being run over by detached trailer/trailed implements. Property by collision</p>	2	<p>Drawbar attached to Quickshift unit via pin. Trailer/trailed implements attached to drawbar attachment via pin and secured in place with linch pin. Not easy to detach accidentally.</p> <p>Operator manual states drawbar must be correctly used and linch pin inserted to prevent drawbar pin from coming loose.</p>	<p>See operator manual for how to attach the drawbar clevis safely, it also states use of drawbar is prohibited for use on public highways, to pull trailed implements to work the ground and not for use for towing a loaded trailer. It is intended for safe movement of such trailed equipment around the yard only.</p>

Manufacturer's Warranty/Guarantee

Your Agriweld Quickshift is covered for a period of 12 months from the date of dispatch (which is recorded on our files) against faulty components and/or bad workmanship.

Guarantees for overseas orders will begin when the product reaches its delivery destination as advised on the delivery/collection paperwork. We ask that you register this date with us to active the products 12 months manufacturer's warranty.

Our welders are coded to ISO 9606-1 and our welding procedures are approved in accordance with ISO 15614-1 to manufacture your equipment. All products are checked for quality prior to delivery/collection.

Agriweld Ltd accepts no liability for instances arising from ignorance, occurrences outside our control, such as accidents or malicious damage and through non-compliance with safety/maintenance instructions and/or by failure to set up the hydraulic reset system (if applicable) in accordance to the ground conditions at the time.

All wearing parts and certain hydraulic fittings/hoses are not covered under warranty.





Please see our standard T's & C's for full details, available on our website www.agriweld.co.uk

DAMAGES DURING TRANSIT:

Damage occurred during transit arranged on your behalf by Agriweld Ltd must be reported to Agriweld before signing for the item from the haulier to enable us to enter any claim with them directly. The limit of our liability to undertake repairs to products damaged during transit is dependent on signing for any damaged product upon delivery as "DAMAGED". Thank you

If you have arranged your own collection/haulage and the order has been received damaged, you will need to follow the same procedure as above to report it, however, Agriweld will not be able to enter any claim with a haulier where transport has been arranged by your own methods. Thank you

STICKERS

Sticker	Part Number	Description	Quantity per Machine
	AW_QS_LS	Quickshift sticker	2
	AW_QS_AS (185 mm x 85mm)	Agriweld sticker	2
	AW_QS_GB (85mm x 50mm)	Great Britain sticker	2
	AW_OM_S	Read operator manual sticker	1

CE DECLARATION OF CONFORMITY

The equipment which accompanies this declaration is in conformity with EU Directive(s):

2006/42/EC Machinery Directive

Manufacturer Name: Agriweld Ltd

Manufacturer Address: Main Street, Garton-on-the-Wolds, Drifffield, YO25 3ET

Product: Basic Quickshift Lifting frame

Product Options: All

Individual Serial Number:

Individual Product Description: An attachment specifically for use on forklifts/loaders with a maximum lift capacity of 5000kg for the lifting and moving of 3 point linkage and trailed equipment

Date of Last Load Test: N/A

Authorised Signatory on Behalf of Manufacturer: Dawn Foster

Position in Company: Director

Date of Issue:

AGRIWELD

